

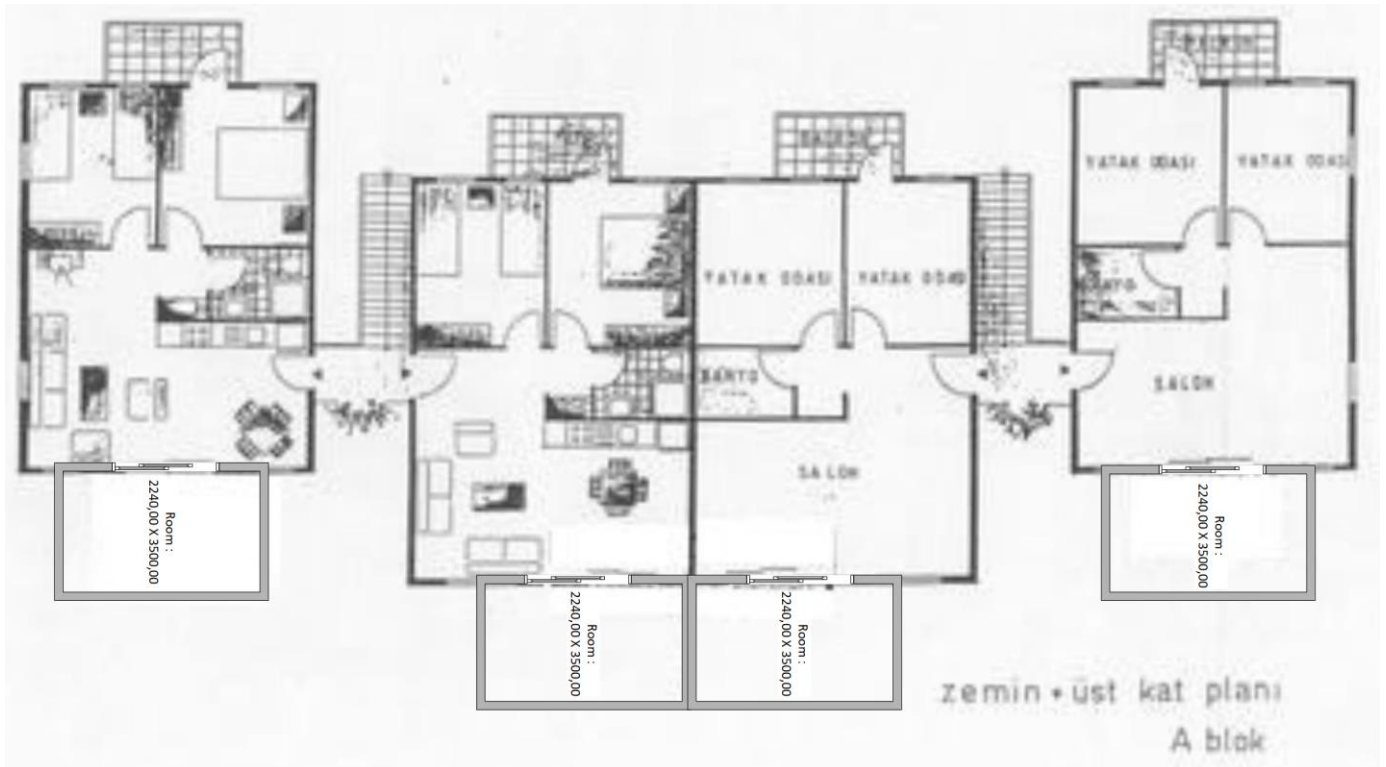
Committee recommendation

3 Bedroom apartments



Here the balconies on the corner flats are joined together. By nature it's probably more people in a 3 bedroom than a 2 bedroom apartment so this will leave just enough space. These building also have a different design than the others so this will be a good solution for this pool area. For the middle apartment the balconies are also joined, but one might consider a slightly shorter extension. In total the extensions will be maximum 80 cm from the old balcony. We have no "picture" made of this type of flat.

2 Bedroom apartments



Around the 3 pools with 2 bedroom flats all the buildings have the same design, and the small differences there is within the Turkish specialized adaptive measurement methods. In this design the committee has extended the balconies from the middle of the windows, and about 2.3 meter out. The wall in the middle under the middle balcony might have to be extended to carry the balcony, otherwise there must be another column in the middle.

Back side balconies: Here it's not possible to make a big extension, and we have no good picture of this. But for those who have apartments towards Miklagard there is very little room before we are over the fence. Also between the P and O block there is limited space.



The committee will remind everyone that the measurements are prone to error and the schematics and pictures are NOT done in the correct scale. This is not possible as we don't have measured photographs and correct schematics.